



# The Frasca B1900C FTD



## A New Concept in Turboprop Simulation

Flight Training for turbine aircraft can be complicated...

It is not feasible to do all the training in the aircraft and while an accurate simulator is essential, a Full Flight Simulator is not always necessary. Sending pilots to a training center can be expensive. More and more operators are using FTDs in their training programs. Enter the Frasca B1900C, an affordable solution for turboprop simulation.

Designed around the specifications for a Beechcraft 1900C aircraft, customers for the device include: Delta State University, Gulfstream Airlines, Middle Tennessee State University, The Argentine Air Force, I.C.A.O., Paraguay and others.



The B1900C FTD was built utilizing Frasca's 40 years experience in the Simulation Industry and is based on technology used in the successful 140 and 240 line of simulators. However, the B1900C FTD is customized for the specific training needs of Turboprop users. These include primary training objectives such as procedural, decisional and perceptual-motor.



### Specifications for the B1900C FTD:

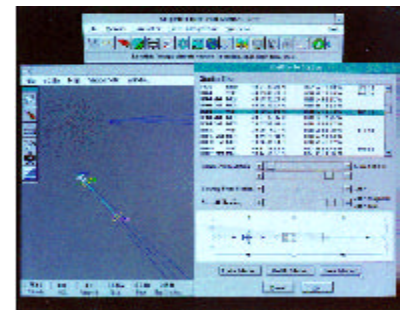
- Cockpit layout based on Beech 1900C aircraft, includes dual operating controls.
- Cockpit equipment, including flight, engine, and systems controls and indicators, is modeled after actual aircraft parts for a high degree of realism.
- Avionics package provides full IFR capability with two COMs, two NAVs (one with RNAV capability), and ADF, and enclosing transponder with digital frequency selection.
- Flight performance modeled by Frasca engineers is based on aerodynamic principals, aircraft performance charts and pilot experience.

### Features Include:

- ➔ **FVS-200TX**, textured visual system with two direct-view color visual display units.
- ➔ **Graphical Instructor Station (GISt)** - shown below. The most advanced human-machine interface that low-cost simulation offers to date.
- ➔ Human engineering for safety, ease of maintenance and ease of operation.

**Left: Exterior view showing instructor station.**

Many options are available for the B1900C FTD including: enclosed instructor cab, collimated visual system, EFIS, and others.



*For more information, contact:*



906 East Airport Road • Urbana, IL 61802-7407  
(217) 344-9200 • FAX: (217) 344-9207 • [www.frasca.com](http://www.frasca.com)  
email: [simulators@frasca.com](mailto:simulators@frasca.com)

