

Frasca's Breakthrough Instructor Station

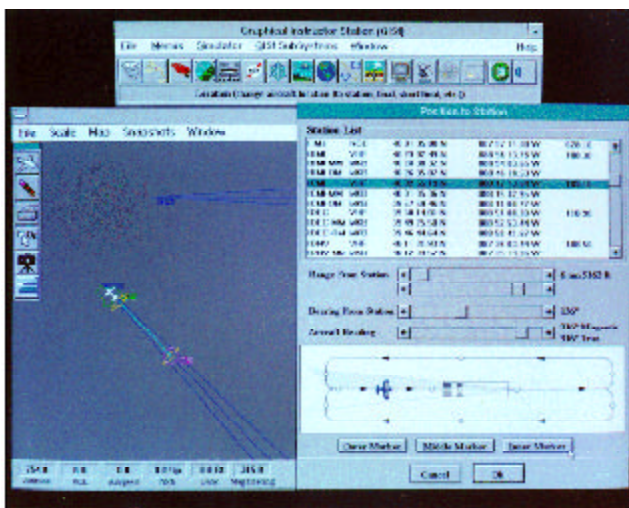
GIST

Graphical Instructor Station

GIST is a computer based instructor station that uses a Graphical User Interface (GUI) to control the simulator. Instead of a keyboard and text based menus, the instructor uses a mouse to point and click at graphical icons. Items are presented to the instructor in an intuitive manner. For example, to control the engine functions, the instructor selects the icon that looks like an aircraft engine.

GIST includes a core group of functions that replace the original menu terminal, the plotter, and the hardware control panel. Additional functions or modules are available as options and provide advanced features (see list below).

GIST is available on all Frasca simulators including the 130s, the 140s, the 240s as well as custom configurations. GIST is also available as a field upgrade for older simulators. Since its debut in 1993, GIST has been installed on over 150 Frasca simulators. In fact, it's become a standard for many new packages, such as the 132P and 142T.



Above: GIST station on Frasca FTD

Standard Features:

- Malfunction Controls
- Environmental Controls
- Visual Controls
- Performance Selection
- Map Display
- Data Base Selection
- & Many More...

Available Options:

- Approach displays
- Lesson Plans
- Record/Replay
- Snapshots
- Hardcopy Printer
- Dual Display Monitors
- NIFA Scoring (for U.S. Collegiate meets)
- Performance Editor
- Station Editor
- Student Record Keeping
- Discrepancy Reporting
- Network Interface

GIST software is based on the Microsoft Windows operating environment. This provides a user interface that most PC users are familiar with. Windows allows for a wide range of hardware selection such as computer types, printers, monitors, etc. With GIST, the instructors workload is reduced, allowing more time for instructing the student – a true benefit!

For more information on GIST or our complete line of flight simulators, contact our sales department: